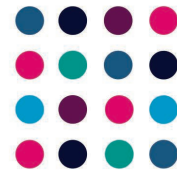


BLOOMSBURY FESTIVAL



17 - 19 OCTOBER 2025
01 - 31 OCTOBER 2026

Celebrating Creativity in Bloomsbury - 20 Years in 2026

New Wave 2025 Concert Series - Proposal Call Out

Please email your proposal to John-Paul Muir (Senior Programme Manager) - submissions@bloomsburyfestival.org.uk

Deadline for proposals: 6pm on Thursday 8 May 2025

As part of our commitment to showcasing emerging artists, we produce a daytime concert series featuring outstanding young musicians. If you fit the criteria below, we invite you to send us a proposal to be part of the series this year. Your suggested programme should reflect the 2025 festival theme '*The Paths We Tread*'. We will then select 5 proposals that will feature in Bloomsbury Festival 2025, which will run from Friday 17 - Sunday 19 October 2025.

The venue(s) for these concerts are currently to be confirmed, but at least one venue will offer a grand piano. Any other equipment provided will be by consultation with the Senior Programme Manager.

Requirements:

- We are open to proposals from all genres including classical, jazz and folk
- You should be studying music at tertiary level or be a recent graduate at the start of your career. This is not a rigid prerequisite however, if you're unsure of your suitability for this series, please enquire on the email address above and we'll get back to you.
- You can apply as a soloist, or as a group (up to 4 musicians max).
- We encourage your proposal to take some inspiration from our theme this year of *The Paths We Tread*. This can be interpreted in any way you wish. Please explain in your proposal how your programme relates to the theme.
- The concert length should be between 45-50 min

Winning Prize:

- Those who are selected to perform a Lunchtime Concert will be offered a cash prize of £150 per concert. **Please note** - this is not a fee for each individual musician performing in one concert.
- The selected musicians will receive invitations to Festival launch receptions in June and October

What you should include in your proposal:

- Your full name, phone number, institution, course and year of study.
- A brief description about yourself and the musicians that will be involved
- How your proposal links to the 2025 theme of *The Paths We Tread*
- What equipment you will require the Festival to provide
- A link to at least one video or audio recording that is representative of your work
- A proposed programme for a Lunchtime Concert

Proposals should be submitted electronically with supporting materials to submissions@bloomsburyfestival.org.uk by 6pm on Thursday 8 May 2025.

Bloomsbury Festival

For hundreds of years Bloomsbury has been a catalyst for ideas that have impacted across the world. The Festival celebrates contemporary Bloomsbury; a hotbed of creativity and pioneering development with one of the youngest and most diverse populations in the country. Bloomsbury's strength lies in its vibrant diversity. Famous for its globally renowned academic and cultural institutions, it also includes areas of multiple deprivation, and it is home to 11,000 residents. The Festival is uniquely placed in relationship to residential communities, local institutions and businesses, and the UK arts infrastructure, and works across all three, uniting specialists with residents from all backgrounds and of all ages in an equal exchange of skills and experience

Bloomsbury Festival is aimed at a mixed-age audience from across London. A large proportion of the programme is aimed at adults, but there is also an important strand of family focused events and activities. Artworks submitted should be suitable for viewing by a general festival/gallery audience.

www.bloomsburyfestival.org.uk